

Adelaide

Australia

Adelaide, Australia

The port

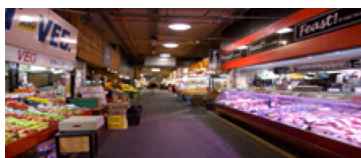
Outer Harbor has played host to many world-famous cruise liners over the years, especially after WWII, when there were many migrants coming in from all over Europe. In the early 1970's, the Government at the time commissioned a new cruise terminal. However, it saw little use for many years, as this time was when international air travel was favoured over cruise shipping.

In November 2009, an upgrade of the terminal was completed, providing a new décor to enhance the visitors welcome to the state, and to improve passenger flows inside the terminal.

The city is surrounded by parklands also known as the entrance to the outback. It is the only Australian city not settled by convicts. It is the wine growing capital having two areas the Barossa Valley settled by german migration, and a favourite McLaren Vale which is just a 25 minute drive from centre of Adelaide. It is surrounded by beautiful beaches and rolling hills with great wines and food. This would make a wonderful excursion.

Shopping

Rundle Mall, in the heart of Adelaide, is great for shopping, featuring over 600 retail outlets including major department stores, as well as little boutique shops, cafes, and souvenir shops. There are often buskers and street performers throughout Rundle Mall as well. The Central Market offers a wide range of local produce.



Central Market

Port Facts:

Port: Adelaide, Australia

Country: Australia
Region: South Australia
Area: 1826 sq km

Population: 1.2 million (2012)
Language: English
Currency: Australian Dollar

Figures

City: Adelaide is the 5th largest city in Australia after Sydney, Melbourne, Brisbane and Perth.
Continent: Australia

Average temperature: As cruise ships normally visit Adelaide in the Summer season (November-March), the daytime temperature can easily reach the mid to high 30°C's, sometimes even up to the low 40°C's, but not very often. The temperature normally averages in the high 20°C's.

Country code: +61
Country URL extension: .au
Electricity: 220-240 V
Opening hours stores: Mon-thurs 9 - 5.30 friday 9 - 9 Sat. 9 - 5, Sunday 11-5
Timezone: GMT + 9:30 hours

Only a 45 minute tram ride from the Adelaide Railway Station, Jetty Road at Glenelg Beach is also lined with shops and cafes.



Transportation

Getting around Adelaide is easy with public transport. There is a free "City-Loop" bus running every 15 minutes seven days a week. The tram is free throughout the CBD, however a ticket is required if you are travelling further (ie to Glenelg Beach). If you are planning on catching public transport while in Adelaide (plus to and from the ship), a day-trip ticket is recommended, (\$9.10, or \$4.50 concession) otherwise, single trip tickets can be purchased, which are valid for 2 hours from time of first validation, and work on all Adelaide Metro buses, trains and trams. Taxis are also available from the wharf for passengers wishing to do their own thing.

The Adelaide City Council offers FREE bicycle hire throughout the city. To hire a bicycle, all you need is your passport or driver's licence, which will be held as a deposit, and returned to you when you return your bike to the point of hire. You can hire bikes from various locations around the city including the Adelaide Council office in Pirie St, or the Convention Centre on North Terrace. They are only available during the day, but unavailable when the forecast temperature for Adelaide is 38 degrees Celsius or above.

Adelaide is also home to the only guided busway track in the southern hemisphere – the Adelaide O-Bahn. Specially equipped buses travel at speeds up to 100km/h along the busway, from North Adelaide to the Tea Tree Plaza shopping centre at Modbury, in the north-east suburbs. The 12km journey on the track can be completed in as little as 10 minutes on an express service, however, the average journey is around 20 minutes.



Tram at Moseley Square, Glenelg

IMPORTANT INFORMATION

About CruiseLegend

CruiseLegend is an independent website dedicated to enhance cruise and port experience.

Disclaimer:

CruiseLegend™ solely distributes opinions of authors and reviewers of submitted content. This information is not subjected to any formal peer review. The contributors, sponsors, advertisers, moderators of ports, administrators, or anyone else connected with CruiseLegend™ can in any way whatsoever be held responsible for any inaccurate, controversial or libelous information or for your use of the information presented in newsletters or on the website. Users acknowledge that advice is subjective and may not conform to the users taste, preference and/or perception of quality issues. CruiseLegend cannot be held responsible for any damages that may result from the use or interpretation from our website.

Visit www.cruiselegend.com/disclaimer.aspx to read our full disclaimer

You can find us on the following social media platforms (search **CruiseLegend**):

[Facebook](#) [Twitter](#) [Pinterest](#) [Instagram](#) [Tumblr](#)

CruiseLegend™